



# Conditional Schedule

## A Day in the Life

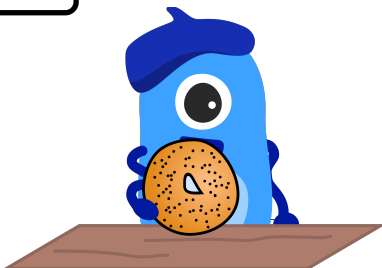
At Evaluatus, Ellis's daily schedule depends on many factors: the weather, what day of the week it is, etc. Let's find out how Ellis makes decisions during different times of the day!

## What are If Statements?

**If statements** are a type of conditional statement used in computer science to perform actions when a certain condition is true. Programming languages represent if statements using the format: **if** a condition is reached, **then** perform an action.

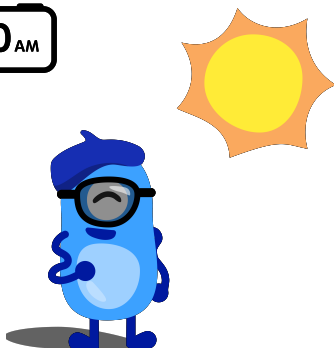
Follow Ellis around Evaluatus to learn how she uses if statements in her daily life!

8:00 AM



**If** Ellis is hungry,  
**then** Ellis will eat a poppyseed bagel.

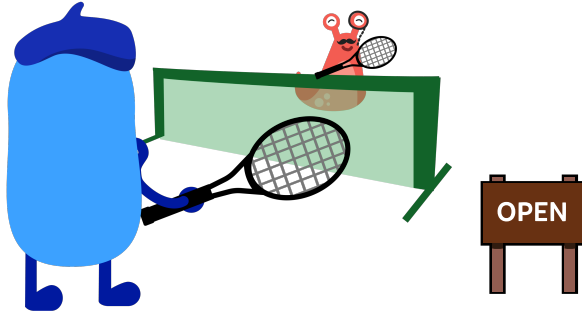
11:00 AM



**If** it's sunny outside,  
**then** Ellis will wear sunglasses.



2:00 PM



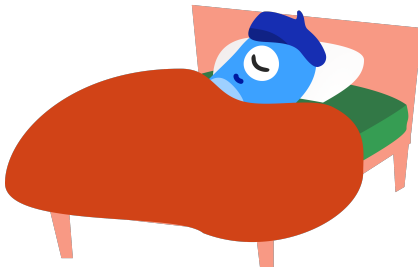
If the Evaluatus park is open,  
**then** Ellis will play tennis with Pancho.

7:00 PM



If Ellis has finished her schoolwork,  
**then** Ellis will read a book.

9:00 PM



If Ellis is sleepy,  
**then** Ellis will go to bed.



## Your turn!

Now that you're more familiar with if statements, you will be creating your version of a conditional schedule! Gather a set of colored pencils to draw and fill in the if statements below.

8:00 AM

If \_\_\_\_\_ ,

then \_\_\_\_\_

\_\_\_\_\_

\_\_\_\_\_

10:00 AM

If \_\_\_\_\_ ,

then \_\_\_\_\_

\_\_\_\_\_

\_\_\_\_\_

12:00 PM

If \_\_\_\_\_ ,

then \_\_\_\_\_

\_\_\_\_\_

\_\_\_\_\_



3:00 PM

If \_\_\_\_\_ ,

then \_\_\_\_\_

\_\_\_\_\_

\_\_\_\_\_

6:00 PM

If \_\_\_\_\_ ,

then \_\_\_\_\_

\_\_\_\_\_

\_\_\_\_\_

8:00 PM

If \_\_\_\_\_ ,

then \_\_\_\_\_

\_\_\_\_\_

\_\_\_\_\_